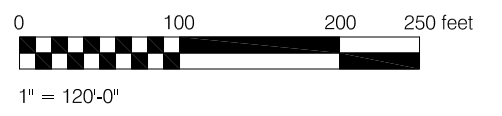
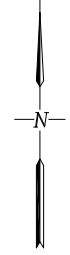


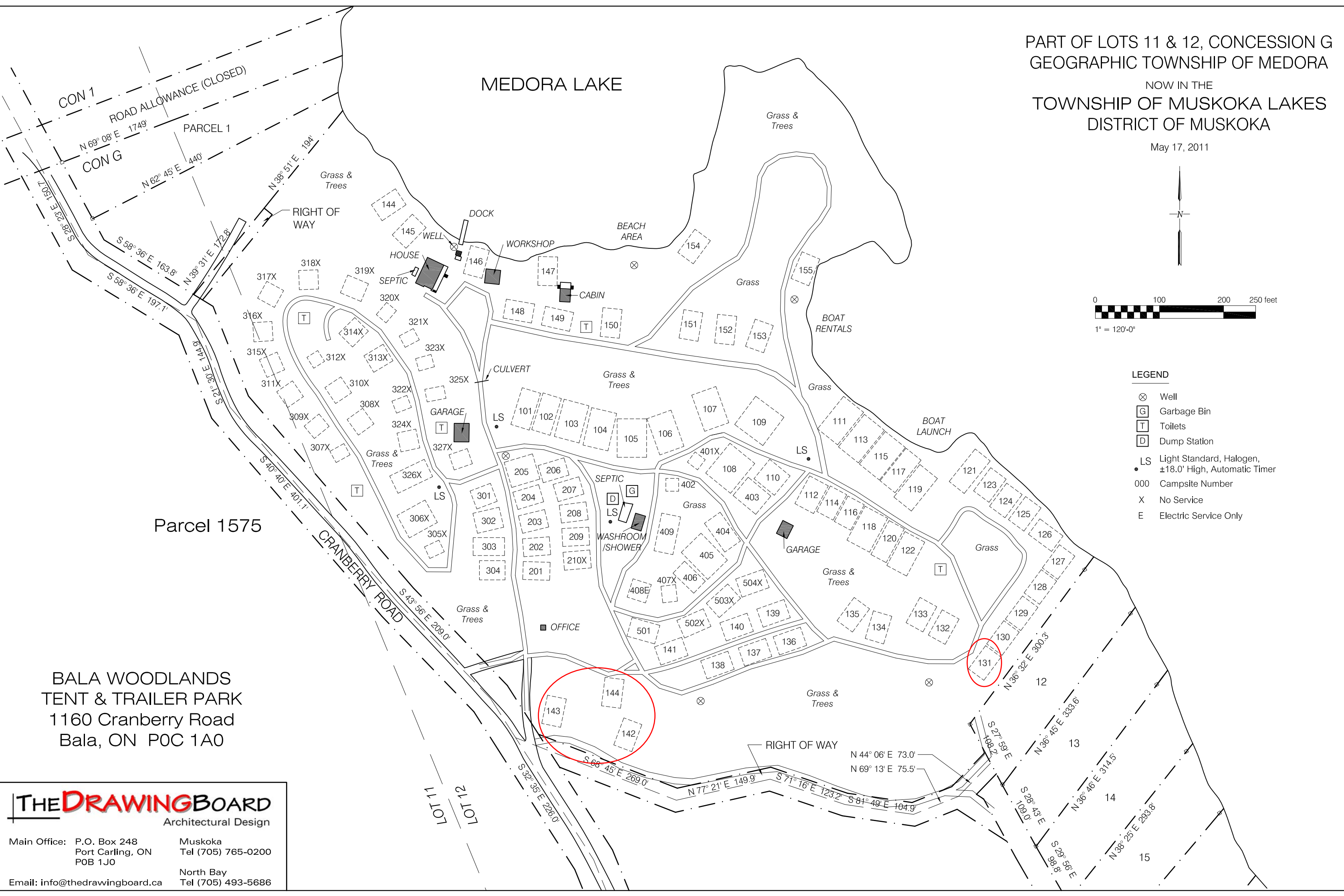
PART OF LOTS 11 & 12, CONCESSION G  
 GEOGRAPHIC TOWNSHIP OF MEDORA  
 NOW IN THE  
 TOWNSHIP OF MUSKOKA LAKES  
 DISTRICT OF MUSKOKA

May 17, 2011



LEGEND

- ⊗ Well
- G Garbage Bin
- T Toilets
- D Dump Station
- LS Light Standard, Halogen, ±18.0' High, Automatic Timer
- Campsite Number
- X No Service
- E Electric Service Only



Parcel 1575

BALA WOODLANDS  
 TENT & TRAILER PARK  
 1160 Cranberry Road  
 Bala, ON P0C 1A0

**THE DRAWING BOARD**  
 Architectural Design

Main Office: P.O. Box 248 Muskoka  
 Port Carling, ON Tel (705) 765-0200  
 POB 1J0

North Bay  
 Tel (705) 493-5686

Email: info@thedrawingboard.ca